



ACTIONS AND COMMUNICATION IN EMERGENCY SITUATIONS

Daniel MODOACĂ – Head of Emergency and Disaster Department



Legal Basis :

1876 – Creation of the Romanian Red Cross

1906 – Creation of the Red Cross Society of Ladies of Romania

1915 – The RRC and the RCSLR merge

1940 – Due to Romanian's territorial loss the RRC is forced to evacuate 27 branches

1947 – The Romanian Red Cross loses its autonomy

1990 – The Romanian Red Cross regains its autonomy

1995 – The Romanian Red Cross Law is adopted (Law no.135)

2003 – A new statute is adopted



Mission:

The Romanian Red Cross assists vulnerable people in disaster and crisis situations. Through its programs and activities in the benefit of society, helps to prevent and relieve suffering in all its forms, protect health and lives promotes respect for human dignity without any discrimination based on nationality, race, sex, religion, age, social or political affiliation.





6 495
volunteers

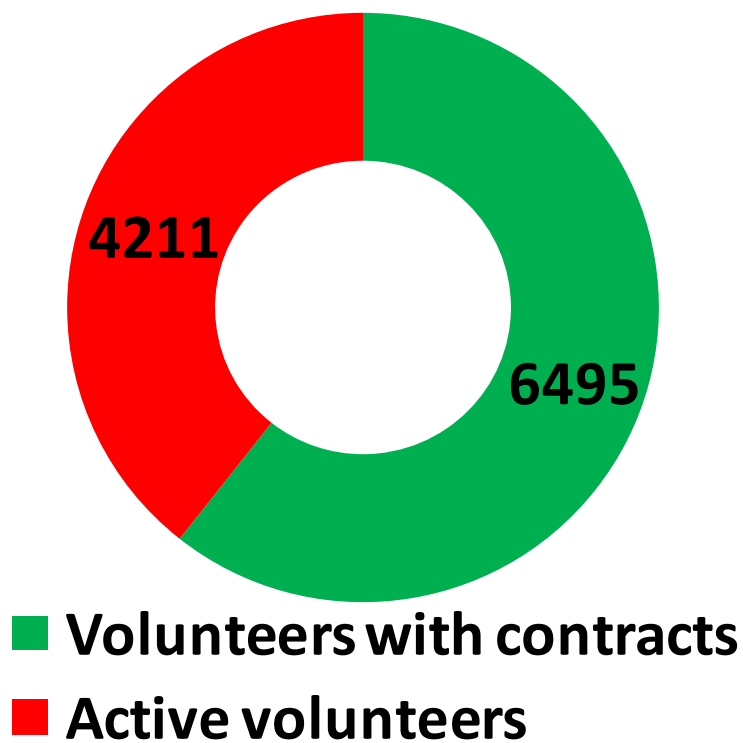
582 138
beneficiaries

211
employees



Volunteers' base

2012



Active volunteers

4 596

4 211

2011

2012



Strategic Aims



**Disaster
Management**



Social



Health



**Humanitarian
Education**

Preparedness and intervention in case of disasters

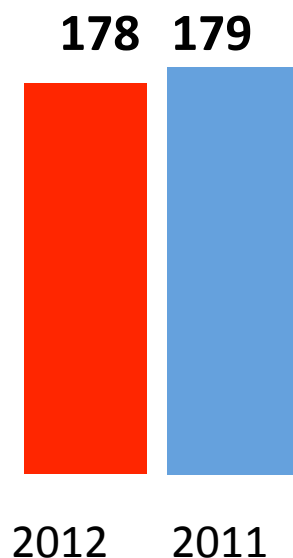


**PREPARING THE POPULATION FOR DISASTER
INTERVENTION**

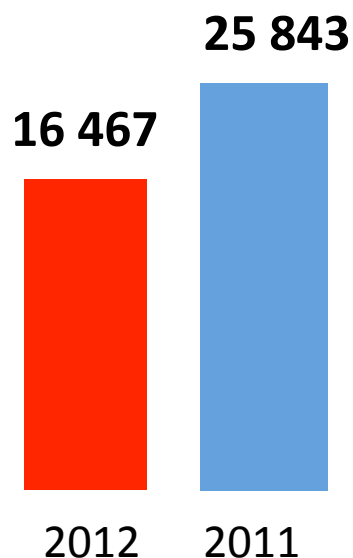


Preparing the population for disaster intervention

Courses and seminars for informing the population



Beneficiaries of courses and seminars



✓ **60 860** flyers distributed

✓ **42** actions for sharing information through radio, local tv, facebook, blog, news on the website, street demonstrations

Seminar/Course Topics :

- ☐ *Proper action during an earthquake/landslide/floods/fire/technological accidents*
- ☐ *Proper behavior during heat waves*
- ☐ *Demonstrations of first aid during emergency situations*



**TRAINING ACTIVITIES FOR THE VOLUNTEERS FROM
THE DISASTER RESPONSE TEAMS**



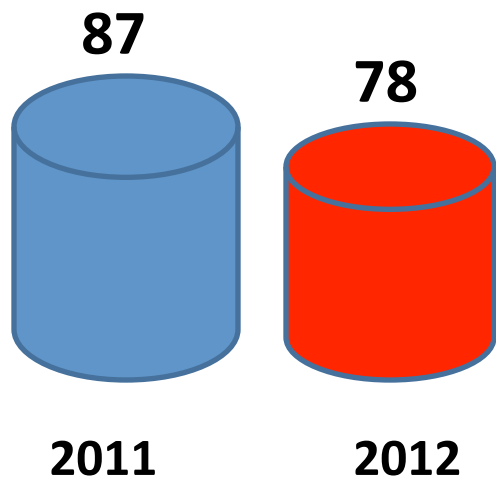
Training the human resources

- **Training courses for volunteers** – *induction* or update of knowledge in first aid, disaster management;
- **Simulations** of disaster intervention;
- **Seminars / camps** for training in disaster intervention;
- **Exercises and practical applications** together with the Inspectorate for Emergency Situations;
- **Trainings** for national and international competitions;

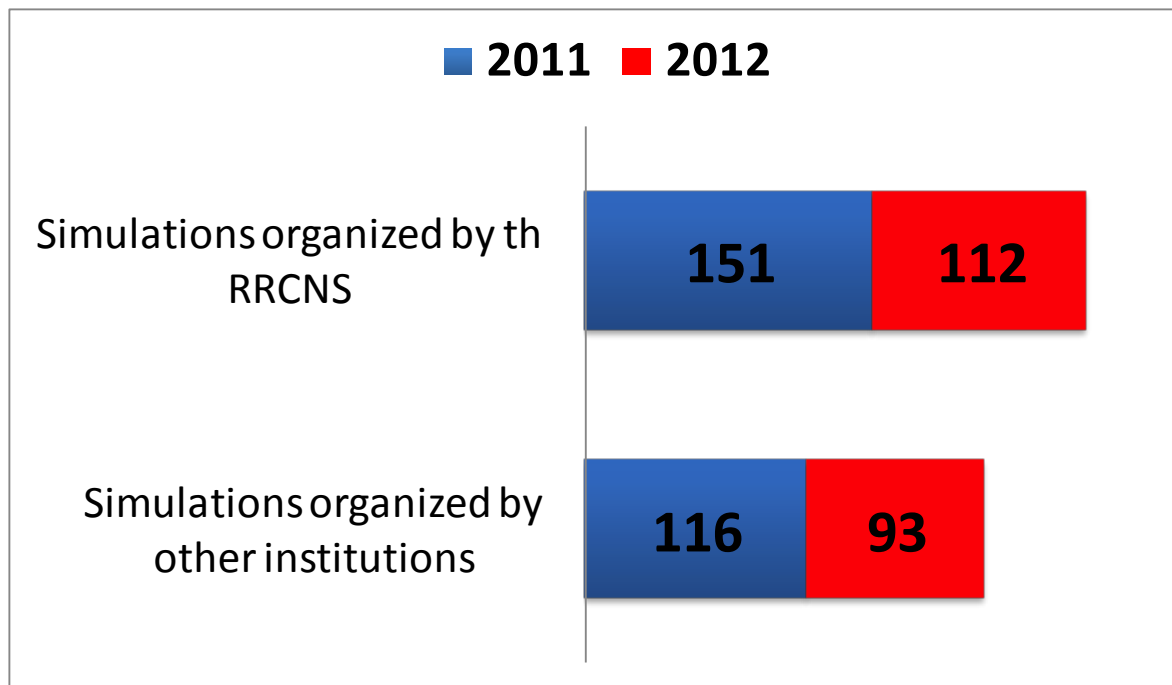


Training the human resources

Disaster Response Teams



Simulations – risk exercises



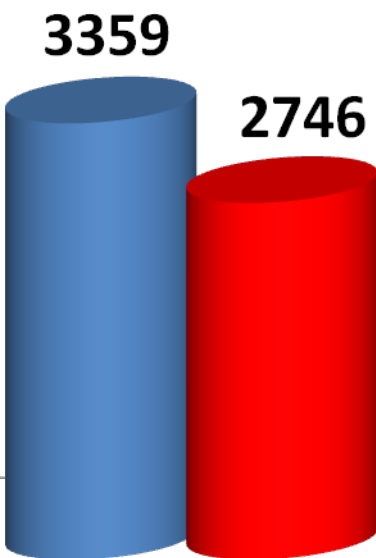
- ✓ **35** branches have organized simulations
- ✓ **34** branches have participated in simulations organized by other institutions



Training the human resources

Trained volunteers

■ 2011 ■ 2012



✓ **252** training courses:

- ☐ Basic First Aid
- ☐ Logistics
- ☐ Psycho-social support

✓ **39** training camps

- ☐ earthquake simulations
- ☐ floods
- ☐ chemical accidents
- ☐ landslides



INTERVENTION IN DISASTERS



What is a disaster?

A disaster is a **sudden**, calamitous **event** that seriously **disrupts** the functioning of a **community** or society and **causes** human, material, and economic or environmental **losses** that exceed the community's or society's ability to cope using its own resources.

Though often caused by nature, disasters can have human origins

$$(\text{VULNERABILITY} + \text{HAZARD}) / \text{CAPACITY} = \text{DISASTER}$$



Legal Basis

- **Law 139/1995 modified by Law no. 524/2004, the SNCRR Statute**
 - **Act 481 of 2004 on civil protection**
 - **HG 2288 in 2004**
-
- **basic first aid**
 - **psychosocial suport**
 - **shelters**
 - **food, water and sanitation**
 - **welfare**
 - **community recovery**



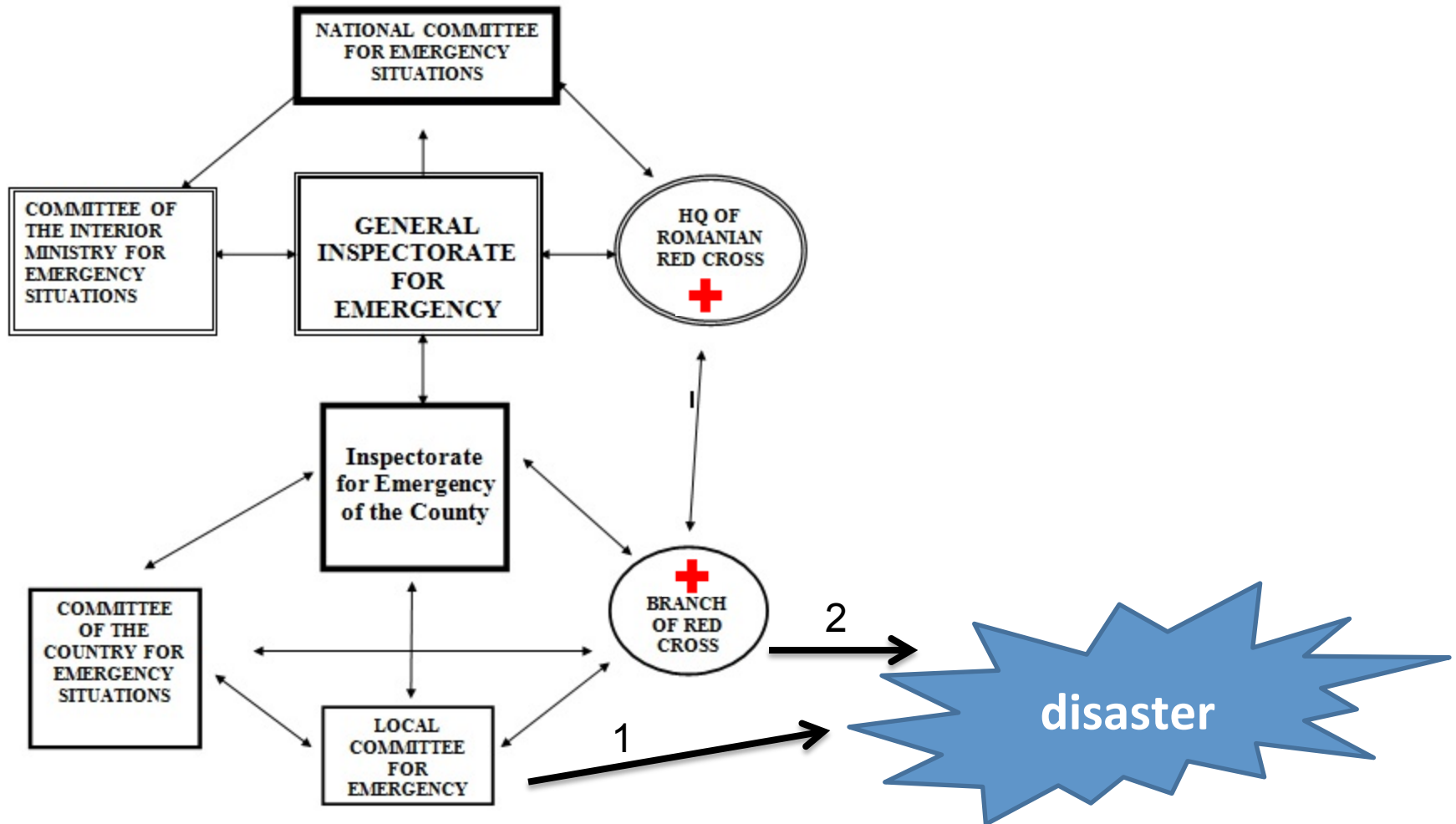
Intervention/Response capacity

- **97 teams of intervention in cases of disasters in all 47 branches**
- **1082 volunteers trained by certified trainers;**
- **A central warehouse of intervention in cases of disasters in Bucharest;**
- **Six regional warehouses intervention in cases of disasters (Dambovita, Bihor, Alba Iulia, Tulcea, Bacau, Iasi)**
- **Shelters and relief items to cover the needs of about 5,000 potential victims**
- **Logistic equipment (cars, trucks, power generator, inflatable tents, light balloons, potibilization instalations, pumps)**





The circuit of the information In Emergency





Communication in Emergency

Head Quarter of RRC ----- General Inspectorate for Emergency

- ☐ GSM
- ☐ E-mail
- ☐ special phone line (powered by STS)
- ☐ Tetra

Head Quarter of RRC ----- Branche of RRC

- GSM
- E-mail
- Teleconference system – in progress

Disaster Response Team Members

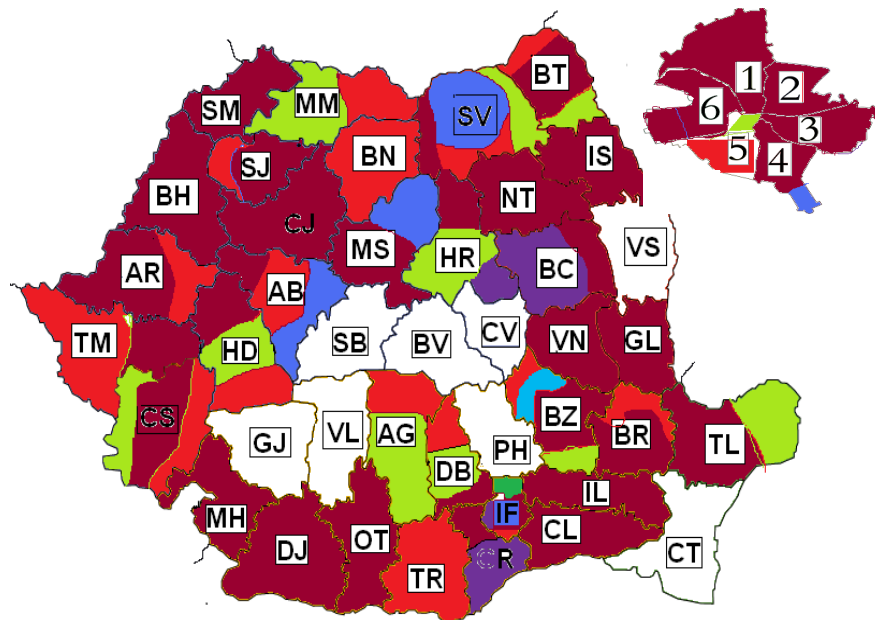
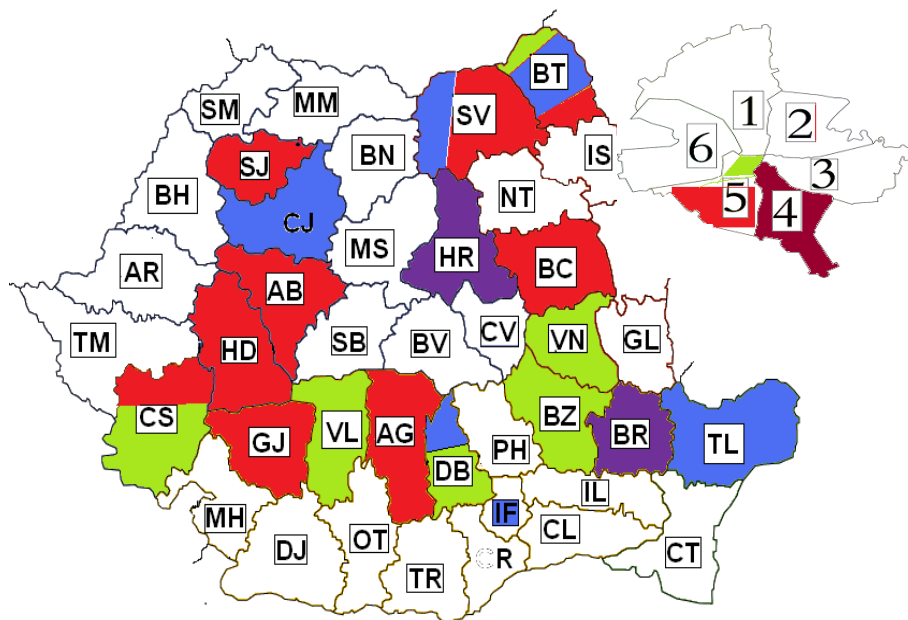
- portable stations Motorola CP 150
- car stations Midland



Emergency interventions

Branches that intervened in 2011

Branches that intervened in 2012



Heat wave

Floods

Fire

Frost / Blizzard /
Snowstorms

Other natural disasters (landslides, industrial
accidents, transport accidents etc.)



Thank you!

Romanian Red Cross National Society

Headquarters

Str. Biserica Amzei nr. 29, sector 1, București, cod 010393

Phone: + 40 21 317 60 06 / 317 05 59

www.crucearosie.ro

www.facebook.com/crucearosieromana